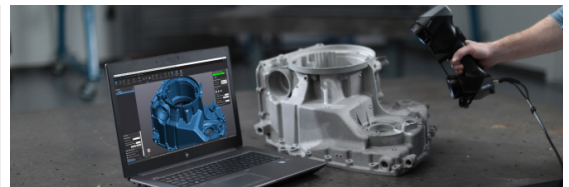


HANDYSCAN BLACK | ELITE

THE CREAFORM HANDYSCAN BLACK | ELITE OFFERS INCREDIBLE SPEED, ACCURACY, PORTABILITY, AND RESOLUTION FOR VERSATILITY IN METROLOGY-GRADE INSPECTION AND REVERSE ENGINEERING APPLICATIONS.

- Portable, hand held and self positioning
- Metrology Grade
- 1,300,000 measurements/second
- Fast, accurate and easy to use



Creaform HandySCAN BLACK Elite									
ACCURACY	Up to 0.025 mm (0.0009 in)								
VOLUMETRIC ACCURACY	0.020 mm + 0.040 mm/m (0.0008 in + 0.0005 in/ft)								
MEASUREMENT CAPABILITIES	<table border="1"> <tr> <td>pin</td> <td>0.750 mm (0.0295 in)</td> </tr> <tr> <td>hole</td> <td>1.250 mm (0.0492 in)</td> </tr> <tr> <td>step</td> <td>0.025 mm (0.0009 in)</td> </tr> <tr> <td>wall</td> <td>0.500 mm (0.0197 in)</td> </tr> </table>	pin	0.750 mm (0.0295 in)	hole	1.250 mm (0.0492 in)	step	0.025 mm (0.0009 in)	wall	0.500 mm (0.0197 in)
pin	0.750 mm (0.0295 in)								
hole	1.250 mm (0.0492 in)								
step	0.025 mm (0.0009 in)								
wall	0.500 mm (0.0197 in)								
ACCEPTANCE TEST	Based on VDI/VDE 2634 part 3								
MEASUREMENT RESOLUTION	Up to 0.025 mm (0.0009 in)								
MESH RESOLUTION	0.100 mm (0.0039 in)								
WORKING DISTANCE	200 to 450 mm (7.9 to 17.7 in)								
DEPTH OF FIELD	250 mm (9.8 in)								
LIGHT SOURCE	22 blue laser lines (+ 1 extra line)								
LASER CLASS	2M (eye-safe)								
MEASUREMENT RATE	1,300,000 measurements/s								
PART SIZE RANGE (RECOMMENDED)	0.05–4 m (0.15–13 ft)								
WEIGHT	0.94 kg (2.1 lb)								
DIMENSIONS (LxWxH)	142 x 79 x 288 mm (5.6 x 3.1 x 11.3 in)								
CERTIFICATIONS	EC Compliance (Electromagnetic Compatibility Directive, Low Voltage Directive), compatible with rechargeable batteries (when applicable), IP50, WEEE								
SOFTWARE INCLUDED	VXelements								
OPERATING TEMPERATURE RANGE	5–40°C (41–104°F)								
OPERATING HUMIDITY RANGE (NON-CONDENSING)	10–90%								
COMPATIBLE SOFTWARE	3D Systems (Geomagic® Solutions), InnovMetric Software (PolyWorks), Dassault (CATIA V5 and SOLIDWORKS), PTC (Creo), Siemens (NX and Solid Edge), Autodesk (Inventor, Alias, 3ds Max, Maya, Softimage)								