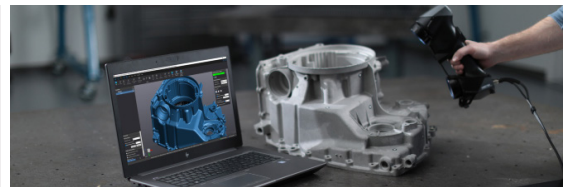


HANDYSCAN BLACK

THE CREAFORM HANDYSCAN BLACK OFFERS INCREASED SPEED AND RESOLUTION. CAN SCAN SHINY AND CHROME PARTS. A VERY VERSATILE 3D SCANNER FOR INSPECTION AND REVERSE ENGINEERING APPLICATIONS.

- Portable, hand held and self positioning
- Metrology Grade
- 800,000 measurements/second
- Fast, accurate and easy to use



Creaform HandySCAN Black	
Accuracy	0.035 mm (0.0014 in)
Volumetric Accuracy	0.020 mm + 0.060 mm/m (0.0008 in + 0.0007 in/ft)
Volumetric accuracy with MaxSHOT Next™ Elite	0.020 mm + 0.015 mm/m (0.0008 in + 0.00018 in/ft)
Measurement Resolution	Up to 0.025 mm (0.0009 in.)
Mesh Resolution	0.100 mm (0.0039 in)
Scanning Area	310 x 350 mm (12.2 x 13.8 in)
Stand Off Distance	300 mm (11.8 in.)
Depth of Field	250 mm (9.8 in.)
Light Source	7 blue laser crosses
Laser Class	2M (eye-safe)
Measurement Rate	800,000 measurements/s
Part size range (recommended)	5–4 m (0.15–13 ft)
Weight	0.94 kg (2.1 lb)
Dimensions (LxWxH)	142 x 79 x 288 mm (5.6 x 3.1 x 11.3 in)
Certifications	EC Compliance (Electromagnetic Compatibility Directive, Low Voltage Directive), compatible with rechargeable batteries (when applicable), IP50, WEEE
Software Included	VXelements
Operating Temperature Range	5–40°C (41–104°F)
Operating Temperature Range (non-condensing)	10–90%
Compatible Software	3D Systems (Geomagic® Solutions), InnovMetric Software (PolyWorks), Dassault (CATIA V5 and SOLIDWORKS), PTC (Creo), Siemens (NX and Solid Edge), Autodesk (Inventor, Alias, 3ds Max, Maya, Softimage)
Output Formats	.dae, .fbx, .ma, .obj, .ply, .stl, .txt, .wrl, .x3d, .x3dz, .zpr, .3mf

*Based on the ISO 10360 standard, volumetric accuracy is defined as a size-dependent value.