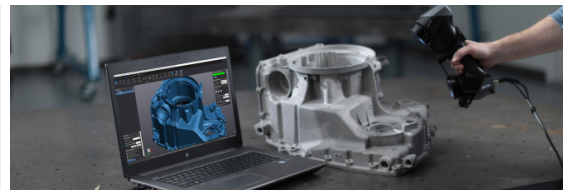


HANDYSCAN BLACK ELITE

THE CREAFORM HANDYSCAN BLACK ELITE OFFERS INCREDIBLE SPEED, ACCURACY AND RESOLUTION. IT IS THE MOST VERSATILE 3D SCANNER ON THE MARKET FOR INSPECTION AND DEMANDING REVERSE ENGINEERING.

- Portable, hand held and self positioning
- Metrology Grade
- 1,300,000 measurements/second
- Fast, accurate and easy to use



Creaform HandySCAN Black Elite

| | |
|---|---|
| Accuracy | Up to 0.025 mm (0.0009 in.) |
| Volumetric Accuracy | 0.020 mm + 0.040 mm/m (0.0008 in + 0.0005 in/ft) |
| Volumetric accuracy with MaxSHOT Next™ Elite | 0.020 mm + 0.015 mm/m (0.0008 in + 0.00018 in/ft) |
| Measurement Resolution | Up to 0.025 mm (0.0009 in.) |
| Mesh Resolution | 0.100 mm (0.0039 in) |
| Scanning Area | 310 x 350 mm (12.2 x 13.8 in) |
| Stand Off Distance | 300 mm (11.8 in.) |
| Depth of Field | 250 mm (9.8 in.) |
| Light Source | 11 laser crosses (+ 1 extra line) |
| Laser Class | 2M (eye-safe) |
| Measurement Rate | 1,300,000 measurements/s |
| Part size range (recommended) | 0.05–4 m (0.15–13 ft) |
| Weight | 0.94 kg (2.1 lb) |
| Dimensions (LxWxH) | 142 x 79 x 288 mm (5.6 x 3.1 x 11.3 in) |
| Certifications | EC Compliance (Electromagnetic Compatibility Directive, Low Voltage Directive), compatible with rechargeable batteries (when applicable), IP50, WEEE |
| Software Included | VXelements |
| Operating Temperature Range | 5–40°C (41–104°F) |
| Operating Temperature Range (non-condensing) | 10–90% |
| Compatible Software | 3D Systems (Geomagic® Solutions), InnovMetric Software (PolyWorks), Dassault (CATIA V5 and SOLIDWORKS), PTC (Creo), Siemens (NX and Solid Edge), Autodesk (Inventor, Alias, 3ds Max, Maya, Softimage) |
| Output Formats | .dae, .fbx, .ma, .obj, .ply, .stl, .txt, .wrl, .x3d, .x3dz, .zpr |